

ON THE SCENE

Lange-Stegmann

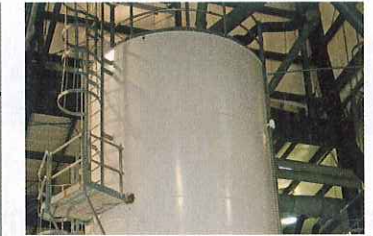
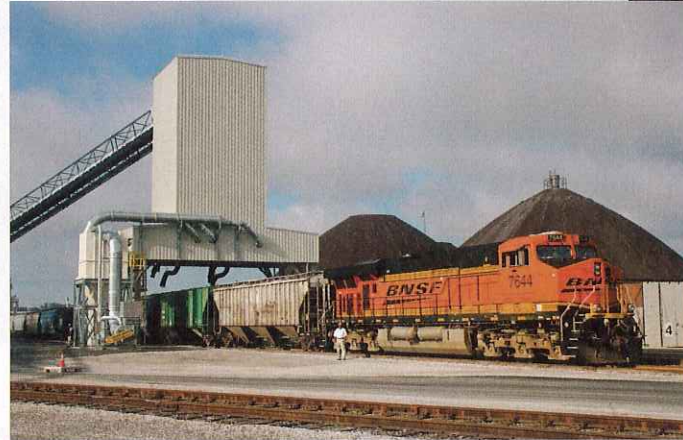
A Hub Of Activity

To meet the growing need for fertilizer across the nation's heartland, Lange-Stegmann has opened a new super-facility. *CropLife®* was there for the ribbon cutting and tour.

Right: By design, the Lange-Stegmann facility is capable of handling unit trains of up to 110 cars without difficulty.

Far right, top: Executives of Lange-Stegmann and honored guests join forces for the official ribbon-cutting at the plant.

Far right, bottom: A Waconia blender for dry fertilizer and mixing drum for liquid fertilizer are some of the many pieces of equipment visitors will find at the St. Louis-based Lange-Stegmann plant.



Above: At the Lange-Stegmann liquid fertilizer plant, product is mixed inside huge holding tanks.

Left: Finished fertilizer is stored in large bags for shipment to customers.

Far left: One of the company's owner, Rick Stegmann, explains how the plant's distribution system is set up and what role the Mississippi River plays in the equation.



LESS VOLUME. MORE OPTIONS.

Maximize your seed treatment options with Vault® LVL inoculant.

With a 3.14 oz./cwt application rate and a BioStacked® formula that combines high-potency live bacteria, conditioner and Integral® biological fungicide, VAULT® LVL inoculant means you can offer your customers more. When growing conditions demand additional fungicides or insecticides, you'll be ready.

Ask your distributor or sales representative for VAULT® LVL or call 1.800.892.2013.

VAULT LVL

BioStacked® The fresher. The better. BECKER UNDERWOOD

Croplife

a MEISTER publication • www.croplife.com

November 2008

Jamie Cressman

Otto Clausen

Scouting, service build sales and loyalty for Harvest Land Co-op

Delivering On The Basics

- Biofuels Update
- Lange-Stegmann Plant Opening

CropLife®

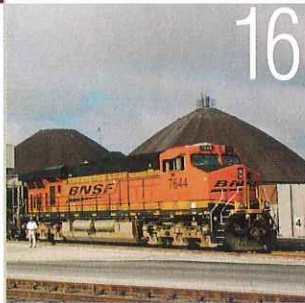
Volume 171 / No. 11 • November 2008
FARM CHEMICALS, DEALER PROGRESS, and AG CHEM & COMMERCIAL FERTILIZER
www.croplife.com



10

10 LEADING WITH SERVICE

Business has blossomed for Harvest Land Co-op over the past two years with its emphasis on servicing "the whole acre."



16

ON THE SCENE 16 A HUB OF ACTIVITY

To meet the growing need for fertilizer across the nation's heartland, Lange-Stegmann has opened a new super-facility.

30 MACA 2008: LIVING IN INTERESTING TIMES

Today's ag retail market is filled with opportunities, if only the industry can avoid some pitfalls along the way.

36 THE PROMISE AND THE PERIL

In early October, Syngenta Crop Protection brought dozens of journalists to Orlando to look at how the ag industry can thrive (and suffer) in the years ahead.

BIOFUELS

18 BIOFUELS GROW UP

Amidst the calls for U.S. energy independence, biofuel stakeholders are making the case that theirs is truly a sustainable option.

ALSO INSIDE

6 AROUND AGRICULTURE/PACE PERSPECTIVES

14 RUST READY Warning System At Ri\$k

32 DEALERSHIP SECURITY

44 ADVERTISER INDEX

OPINION

4 UPFRONT Topping Out

40 AGKNOWLOGY How Much Is Boneless Chicken Worth?

46 EDITORIAL A Tie That Binds



32



30

CropLife ©2008 Meister Media Worldwide - all rights reserved, (ISSN 1535-3923) is published monthly by Meister Media Worldwide, 37733 EUCLID AVENUE, Willoughby, Ohio 44094. Subscription rates in the U.S. and its possessions is \$36.00 annually, Canadian \$46.00 (includes GST), other foreign countries \$58.00, 1 year international airmail \$80.00. CropLife is a trademark of Meister Media Worldwide. Mention of a product name is not to be considered an endorsement nor an indication that the product has been inspected or tested by CropLife. Notwithstanding information on agricultural chemicals presented here, exclusive reliance must be placed on directions and information supplied by the manufacturer or state agricultural agents or advisors. Always read the label or other instructions provided by the manufacturer. Acceptance of advertising in CropLife in no way constitutes approval or endorsement of products or services advertised nor agreement with any representation or claim stated. CAN GST Number 131915035. Periodicals postage paid at Willoughby, Ohio 44094 and additional mailing offices. Postmaster: Please send address change Form 3579 to: CropLife, 37733 Euclid Ave., Willoughby, Ohio 44094-5925.

CropLife Technology

• E-Business • PrecisionAg • Automation • Information Management

26 LOWERING THE BOOM Boom section controls can help put a lid on input costs.

